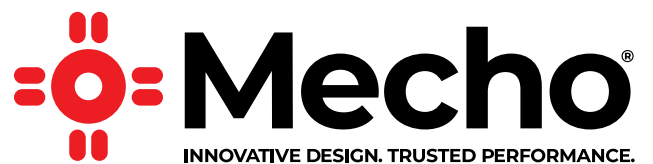


SOLUTIONS OVERVIEW



Midtown West Ferry Terminal / New York, NY
Architect / William Nicholas Bodouva & Associates
Photo / Mecho



Mecho is the premier solution for state-of-the-art manual, motorized, automated, and integrated shading systems. Mecho's commitment to environmentally responsible, human-centric design, energy-saving products and control systems is recognized as the preferred solution provider to the architecture and design community.

Mecho products contribute to building and occupant health. Mecho's SolarTrac® automated shading system, with cradle to cradle certified EcoVeil® shade cloth, is installed in the USGBC's LEED® Platinum-rated headquarters in Washington, D.C. Architects and designers have made Mecho the product of choice for building performance and occupant health.



Northwestern University / Chicago, IL
Architect / Perkins+Will
Photo / Mecho



Contents

Automation / 4–6

SolarTrac
Wireless Daylight Sensor
SunDialer

Integration / 7

MechoNet Network Interface

Motorized Shades / 8–9

ElectroShade

Manual Shades / 10–11

Mecho/5
UrbanShade
DoubleShade

Specialty Shades / 12–14

MagnaShade
Monumental Shades
ShadeLoc
Bottom-Up Shades
Sloped Shades
SkyLighter Shades
ImageShades
Custom Solutions

Sustainability / 15

SolarTrac® 4.0 — The Pinnacle of Solar Management for Optimum Performance

Mecho's state-of-the-art automated shading system has been enhanced to make shade automation easier and more efficient than ever. Designed to maximize the natural daylight in your building, increase energy efficiency across multiple glass facades, ensure occupant comfort and performance, and improve building energy management—all while preserving valuable views to the outside.

Innovative, Technology-Driven Performance

- Self-diagnostics to alert you to potential maintenance needs
- SolarTrac 4.0 is PC-based supporting smart phone access and allowing up to 100 simultaneous users

Precise Shading Control through Automation

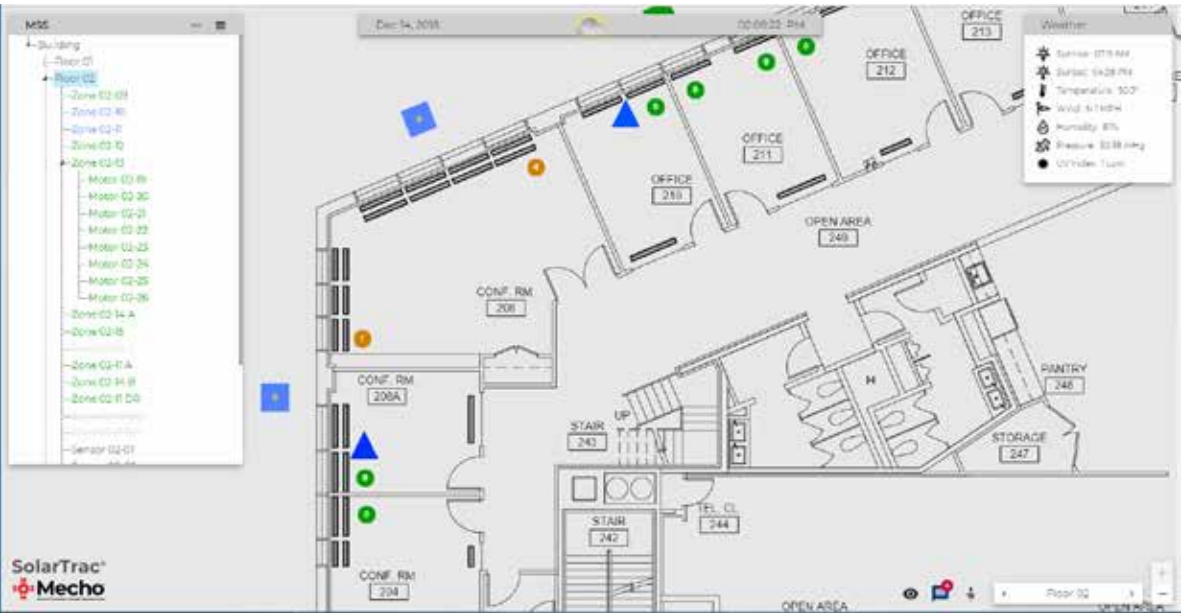
- SolarTrac 4.0 Incorporates an open BACNet certified system that works with all major building automation systems for peak building efficiency
- Manage 1,000 or more shade zones, with continuous minute/day/year analysis to control a comprehensive automated shading system for the entire project no matter the size
- Allows for manual override in any individual shade or shade zone based on occupant comfort preferences

Features

- SolarTrac 4.0 adjusts shades based on proprietary algorithms that precisely predict the sun's position based on date, time, building GPS location, and glass façade orientation
- Rooftop radiometers assist to determine real-time sky conditions to adjust shades accordingly
- Precise daylight harvesting saving up to 70% in lighting costs
- Reduce solar-heat gain, which decreases demands on HVAC systems
- Alleviate solar glare to create a more comfortable, productive environment for building occupants
- SolarTrac 4.0 shade automation can help contribute to your building's LEED and WELL certification



U.S. Green Building Council Headquarters / Washington, D.C.
Architect / WDG Architecture
Photo / Larry Olson



SolarTrac Browser Interface

- Navigate between floors, zones and shade motors to check status and override position when required.
- Interactive floor plan provides intuitive graphical access to zones and motors on each floor.
- Setup key zones for quick access viewing and service from the home screen.
- Customize configuration settings for zones and motors.
- Setup users and define access permissions and passwords.



Van Andel Institute / Grand Rapids, MI
Architect / Rafael Viñoly Architects
Photo / Feinknopf .



Wireless Daylight Sensor and Roller Shade Control

Mechos' Wireless Daylight Sensor and Controller with EnOcean® wireless technology monitors interior daylight and adjusts shades accordingly.

- Allows for custom shade positions based on light levels and reduces energy consumption for HVAC and lighting while managing sun glare
- Excellent for new construction or retrofit on commercial and residential applications
- Each controller manages up to sixteen EnOcean devices
- Ability to be paired with SolarTrac® for glare control



Gateway internal control
for 3rd-party systems

SunDialer® — the intelligent controller

Award-winning, patented SunDialer offers economical shade automation for small-scale and retrofit projects.

- Incorporates a twelve-zone controller integrated with roof-mounted radiometers and intelligent motorized roller shades
- Determines shade positions for each zone by the profile angle of the sun, allowable solar penetration, and sky conditions
- Features an astronomic timer and event scheduler that customizes shade-band positioning during special events, holidays, or weekends
- Uses window geometry and window orientation for each control zone for calculating a user-adjustable solar-penetration threshold
- Provides data logging allowing the ability to fine tune the system over time
- Utilizes browser interface facilitates convenient access to monitor performance, remotely override shade position, set up/alter scheduler and configuration settings



The Residences at the Ritz-Carlton / White Plains, NY
Architect / Costas Kondylis + Harvey Kaufman
Photo / Mecho

MechoNet™ Network Interface — One Network. Total Control.

A compact communication and control hub, the MechoNet Network Interface centralizes the interface between Mechos' window-covering solutions. MechoNet enables control not only of shading, but is able to integrate into most building control systems.

- Four motor ports support up-down control and positioning for up to three presets via switch ports, IR port, serial port, and MechoNet
- Each motor port supports multilevel control for up to nine different zones/addresses
- Support economical low-voltage, dry-contact control of window coverings from IQ decorator switches, RF remotes, third-party keypads, and relay controllers
- Switch ports support a variety of button positioning-control switch configurations
- Serial port enables two-way integration with third-party systems



The Clark Art Institute / Williamstown, MA
Architect / Tadao Ando
Photo / Carlos Rivera

WhisperShade® IQ2-DC — Intelligent, quiet, and powerful shade control

Mecho introduces another best-in-class solution with the new, patented, WhisperShade IQ2-DC Drive Unit for our ElectroShade® systems. Mecho shading systems that incorporate the IQ2-DC are the most powerful and most advanced on the market. The IQ2-DC is ideal where ever heavy lifting power and quiet operations are required including healthcare, hospitality, corporate office, and education applications.

The IQ2-DC makes motorized shade installation easy and does not require expensive electrical components or electrician time while providing unparalleled performance and efficiency.

Intelligent

The IQ2-DC motor is so advanced it will even alert you to potential maintenance issues before it creates an interruption in shade functionality. No other shading system on the market can do this.

Quiet

At only 38dBA, the IQ2-DC is quieter than a whisper in a library making this the "go-to" motor where silence is required.

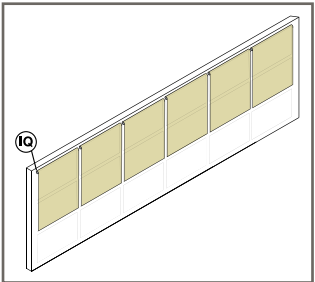
Powerful

Mecho's IQ2-DC has the largest lift capacity in its class, capable of lifting shades up to 600 sq. feet. This means you can lift larger single shades—or more coupled shades—with a low-voltage motor than our competition.

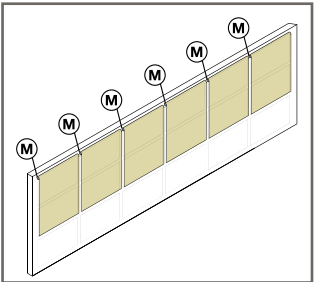


High-torque, large lifting capacity

- Single motor to drive multiple shade bands
- Multi-banding to reduce the motor count and wiring needs which minimizes costs
- Variety of configurations including DoubleShades, monumental, multi-banded, SkyLighter®, and specialty shades



High torque (120VAC) IQ2 Electronic Drive Units can quietly lift multiple or larger shade bands, reducing motor and wiring costs.



Low voltage motors can typically operate one or two shades at a time, increasing motor and wiring costs.



Rush University Medical Center / Chicago, IL
Architect / Perkins+will
Photo / Robert R. Gigliotti

Mecho®/5x — Lift larger. Lift heavier. Experience Effortless.

The Mecho/5x super-powers the clutch that created the commercial shading industry. Our innovative, patented technology allows our manual shading system to lift larger, heavier shades than our competition and provide a consistent, nearly effortless user experience.

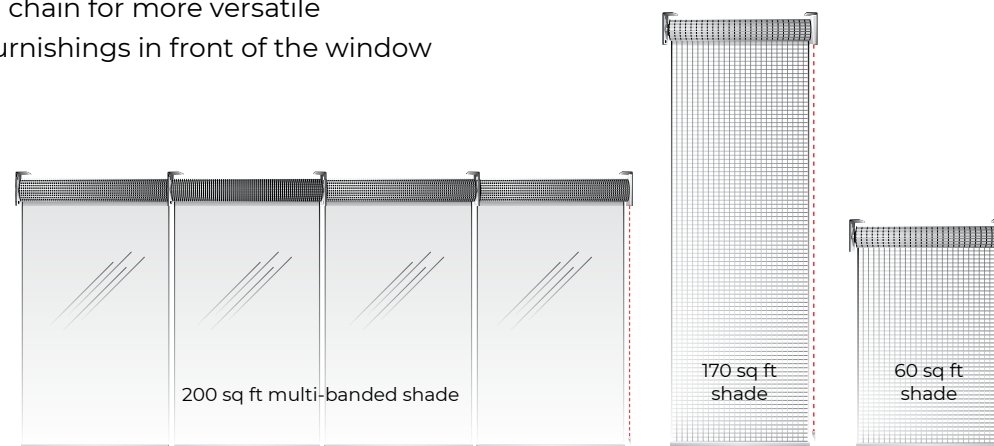
Mecho/5 and 5x manual shades are the only complete hardware-and-shadecloth system with a twenty-five-year Limited Warranty including 100% replacement and no depreciation over the life of the warranty.

- Allows for larger multi-banded shades—including 5 bands—up to 360" wide*
- Allows for larger, single shades up to 180" wide to eliminate light leaks*
- Engineered for maximum lift with the least amount of effort
- Durable and built for the toughest, largest and heaviest commercial applications
- Greater angle on shade pull chain for more versatile operation when there are furnishings in front of the window

* dependent on fabric weight

Different shades, similar operating experience.

Pull force is within the same range (3 to 8.5 lbs).



When installed with EcoVeil®, EcoVeil Sheer, or AcoustiVeil shadecloth, the Mecho/5x is the only complete window-shading system with Cradle to Cradle Bronze™ certification.

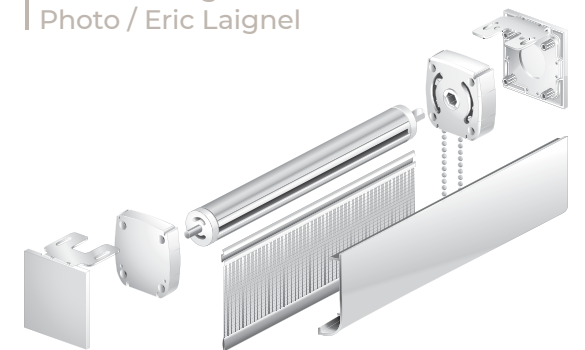
DoubleShade®

- Allows both solar control and blackout shadecloth on a single bracket
- Compact profile allows two shades to fit in a smaller area
- Single solution requires less measuring and ensures proper alignment

Available for Mecho/5x or UrbanShade (shown)



Nixon Peabody's Office / Washington D.C.
Interior design / Perkins+Will
Photo / Eric Laignel



UrbanShade™

An economical, durable, and flexible system with a sleek, compact design. It has received WCMA and Best of NeoCon® Gold honors.

- Fascia offered in captured and continuous, square and round, in a full range of colors, with a smaller profile
- SnapLoc® spline and optional SnapLoc fascia for easy removal and maintenance of shadecloth bands
- Available in single bracket or compact double-bracket system
- Optional upgrade to battery-powered motorized system with RTS wireless remote control or low-voltage motorization with wireless RTS, RS-485, or dry-contact controls



Aria Lobby / Las Vegas, NV
Architect / Cesar Pelli
Photo / Carlos Rivera

Big Windows. Big Solutions.

Monumental shades and MagnaShades® provide two solutions for similar problems.

At up to forty feet wide by twenty feet high, these shades are able to provide a singular shade band to reduce unsightly seams and light leaks.

- Adaptive system for effective shading in areas with very large windows
- Utilizes powerful ElectroShade® motors
- Uninterrupted shading or blackout fabric to avoid curtain wall
- Shadecloths remain flat, without interruptions from mullions or other architectural elements

MagnaShade's super power is its small profile, using a 3.5 inch tube where a 12 inch tube is typically required. This allows the shade to work in areas where other installations will not.

- Prefabricated shade cradle and housing cassette
- Simplified installation
- Modular design provides rigid shade-tube support without widening its girth or creating deflection
- Patented floating-mounting system

The Clark Center / Williamstown, MA
Architect / Tadao Ando
Photo / Carlos Rivera

ShadeLoc® — Superior daylight control

Shade bands glide smoothly and securely within the channels and provide superior solar-shading, complete room-darkening, or both in one installation.

ShadeLoc channels are narrow and feature a SnapLoc® assembly that conceals fasteners and plugs to provide a clean, finished surface.

- Shade bands lock into side channels preventing light gaps
- Single and double shade applications
- Slim side channels and slim center-support channels for multi-banding
- Surface or jamb mounting available to match any design
- Low maintenance costs by protecting shade path against damage
- Optional seamless cover



Bottom-up shades

- Flexible design that allows for multiple shapes, configurations, and sizes
- Creates privacy on lower floors—especially the ground floor of a building
- Guide cables are configured to meet design and operational preferences

Sloped shades

- Meets the needs of today's ever-changing building facades
- Tension cables with a roller tube map a shade's movement and ensure it follows the slope
- Smooth operation ensuring a flat shadecloth

SkyLighter® shades

- Ceiling shade system to increase daylight
- Control heat and glare which can be problematic with skylights
- Effective and stylish system appropriate for a wide range of shapes, angles, and sizes

ImageShades®

- A unique, efficient way to create visual interest by adding custom colors or design
- ImageShades offer an eye-catching, attractive vehicle for signs and banners, architectural graphics, exhibits, retail storefronts, conference centers, and room dividers



Cleveland Clinic, Lou Ruvo Center
for Brain Health / Las Vegas, NV
Architect / Frank Gehry
Photo / Carlos Rivera

Complexity Simplified

From asymmetrical shapes, twists, turns, custom colors and designs, to controlling daylight, to meet occupants specific needs; Mecho has a long history of innovation, quality, and performance. We have a team of engineers, designers, and product specialists in the Mecho Design Lab waiting for your next accomplishment. We dare you to imagine it. We can't wait to create it!

Product Configuration

Any size, any shape. We are your solution to geometrical challenges.

Custom Finishes

If we do not have the right solution in our expansive line of fabric, we are able to use our extensive network to source or create the material you need to fit your project.

We can design customized finishes on all of our shading accessories from fascia and side channels to custom hardware.

Total Control

From protecting art to providing daylight to highlight architectural elements to occupant performance; different projects have different daylighting needs. No matter the application, we can configure a solution that will meet your needs.

We can commission and design your automated shading solution to make sure your occupants are getting the functionality they need from your shading system.



Commitment to Sustainability

For decades Mecho has engineered daylighting solutions for the most rigorous sustainability goals. We developed EcoVeil® Shadecloth as a PVC-free solution with similar performance and aesthetic attributes as our ThermoVeil Collection. With our most recent launch of EcoVeil Sheer, we have optimized the 100% polyester shadecloth to eliminate the need for chemical flame retardants, continuing Mecho's commitment to occupant health.

LEED, WELL and Living Building Challenge

Mecho products and systems can help you achieve third-party building standards such as LEED, WELL, and Living Building Challenge Certification.

Awards and Memberships

- U.S. Green Building Council (USGBC)
- Coalition for Government Procurement, Green Excellence in Partnership (EIP) award
- Cradle to Cradle (C2C)™ Products Innovation Institute
- Interior Design magazine, Best of Year Merit award
- Green Building Initiative
- BuildingGreen, GreenSpec® Top 10 Green Products
- Health Product Declaration Collaborative
- Nightingale Product Design Awards
- Greenguard Environmental Institute Indoor Air Quality Certified® program
- Greenguard Environmental Institute Children & Schools program



Mecho is synonymous with quality and innovation. Whether supplying a unique solution, customized design, or delivering clean and robust products that will stand the test of time, Mecho has the solution that architects and designers specify to get the job done right.



(718) 729-2020

mechoshade.com