

HEALTHCARE FACILITIES



Parkland Memorial Hospital / Dallas, TX
Photo / Carlos Rivera



UT Southwestern Medical Center / Dallas, TX
Photo / Carlos Rivera

PATIENT EXPERIENCE

With healthcare transitioning to being more patient-centered, healthcare architects and designers must focus on creating an enhanced patient experience. Carefully controlling daylight is part of that experience.

Mecho is the industry leader in daylight control. Utilizing motorized and automated roller shade systems, room darkening textiles, and Nightingale Award* winning shade products and accessories, Mecho shades help create the optimum environment for patient comfort.

Mecho's automated shade systems allows the patient to take greater control of their environment and adjust shading to maximize views, allow more daylight into their space yet eliminate uncomfortable and sometimes painful solar glare.

** Products that contribute to healing*

STAFF SATISFACTION

As healthcare shifts to a team approach, patient recovery areas need to support greater levels of staff-patient care, interaction and satisfaction.

Mecho's shade switches—including pillow and wall—allow the patient, caregiver, or visitor to independently adjust room shading to control daylight and reduce solar heat gain and glare for maximum patient comfort and satisfaction.



Rush University Medical Center / Chicago, IL
Photo / Robert R Gigliotti

BUILDING EFFICIENCIES

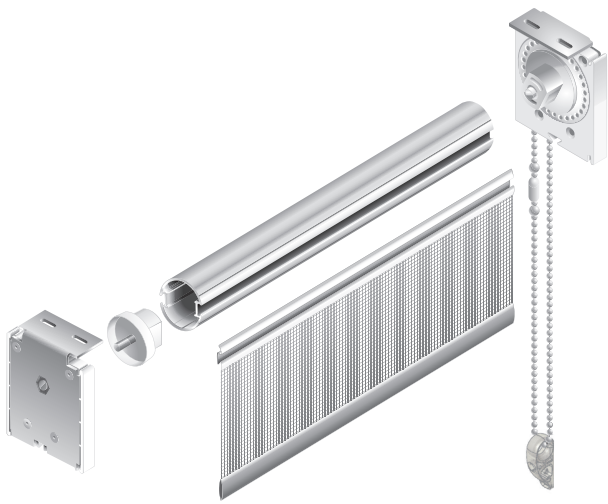
As healthcare facility managers look to maximize building technologies and reduce costs, "smart" technologies are increasingly used to enhance building system performance. This means healthcare architects, designers and engineers are frequently turning to Mecho's MechoNet control system to automatically adjust room shading.

In addition to shading, MechoNet also supports third party controls and systems for lighting, AV, and building automation allowing the design team to select the best systems possible for building controls.

WARRANTY

Mecho®/5 System's Lifetime Limited Warranty applies to original purchasers on all hardware and shadecloths for the life of the interior project for which it was originally purchased, not to exceed 25 years.

Complete warranty information is available at mechoshade.com/resources/warranty-coverage/



CONTROL SYSTEMS

ElectroShade

Available with several types of optional control systems that range from basic switch plates to sun-tracking systems for building management.

WhisperShade® DC50

This motorized roller-shade system combines networking capability with powerful operation and the industry's quietest motor.

Mecho®/5 manual shade

Our classic manual roller-shade system lets in plenty of what patients need (natural light and outdoor views) while reducing what they don't, (heat and glare).

UrbanShade®

Competitively priced and easily reconfigured in the field for special site conditions, this system features compact design and is offered in manual or motorized and single or double configurations.



SHADE SYSTEMS

EcoVeil®

A series of fully recyclable, flame retardant, washable, UV-resistant, and antifungal shadecloths.

EcoVeil Sheer™

Free of PVC and chemical flame retardants, EcoVeil Sheer is the first shadecloth to meet the Healthier Hospitals Initiative Safer Chemicals Challenge, and has also earned Best of NeoCon Silver 2017, a Cradle to Cradle™ Material Health Certificate, and a Nightingale Award.

ThermoVeil® Vertical Privacy Weave

Specifically intended for hospitals to provide diffused daylight and privacy at night. The shadecloth is flame-retardant and GREENGUARD® Certified.

Blackout Shadecloth

- Equinox® Blackout 0100 Series: PVC-free, and flame retardant.
- Midnite® Blackout 0200 Series: PVC-free, and flame retardant.
- Chelsea Blackout 0250 series: PVC-free, flame retardant, and offers dark grey exterior-facing color.



(718) 729-2020

mechoshade.com