

EcoVeil® Sheer

6750 Series (3% open), 6850 (1% open)

This 100% polyester series is woven in a broken twill weave from individually pigmented yarns, allowing for sophisticated patterns, and is offered with a reversible face. It is a part of Mecho's full-certified Cradle to Cradle shade system and is the first solar shade to pass NFPA 701 without chemical additives. **To order the shade cloth's reverse side so that it faces the room, please add an "R" to its code, for example "6758R."**

- Content: 100% polyester
- PVC and chemical flame retardant free
- Visible Light Transmittance (Tv): See below
- Stocked: 63" and 118" wide
- NFPA 701-2015: pass



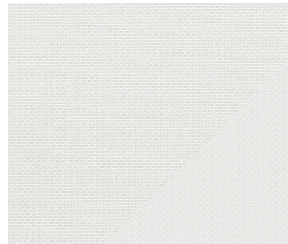
Declare.



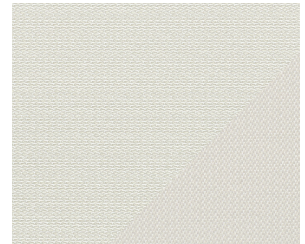
6751* Porcelain | Tv: 36%
6851 Porcelain | Tv: 30%



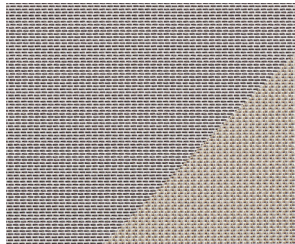
6752* Quartz | Tv: 34%
6852 Quartz | Tv: 30%



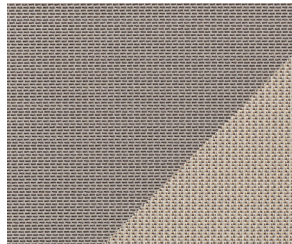
6753* Glass | Tv: 33%
6853 Glass | Tv: 26%



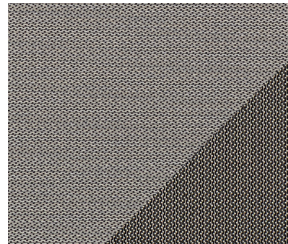
6754* Stone | Tv: 29%
6854 Stone | Tv: 21%



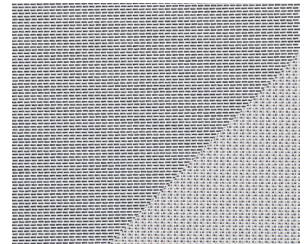
6755* Clay | Tv: 19%
6855 Clay | Tv: 12%



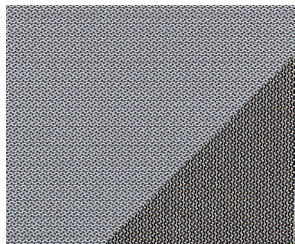
6756* Adobe | Tv: 17%
6856 Adobe | Tv: 10%



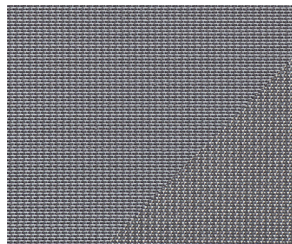
6757* Timber | Tv: 10%
6857 Timber | Tv: 5%



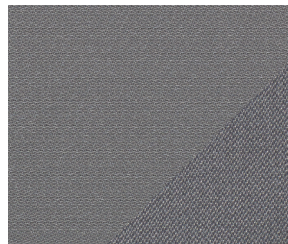
6758* Titanium | Tv: 22%
6858 Titanium | Tv: 15%



6759* Slate | Tv: 12%
6859 Slate | Tv: 4%



6760* Steel | Tv: 12%
6860 Steel | Tv: 6%



6761* Metal | Tv: 11%
6861 Metal | Tv: 4%



6762* Graphite | Tv: 9%
6862 Graphite | Tv: 2%

*Shown



(718) 729-2020
mechoshade.com